



Manure Management Equipment



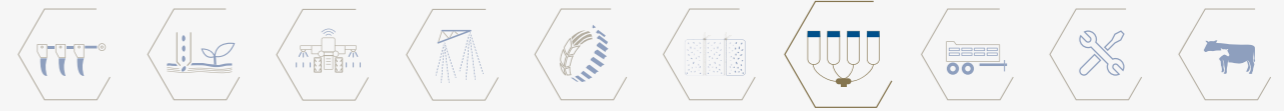
Manure Pump

Technical Details

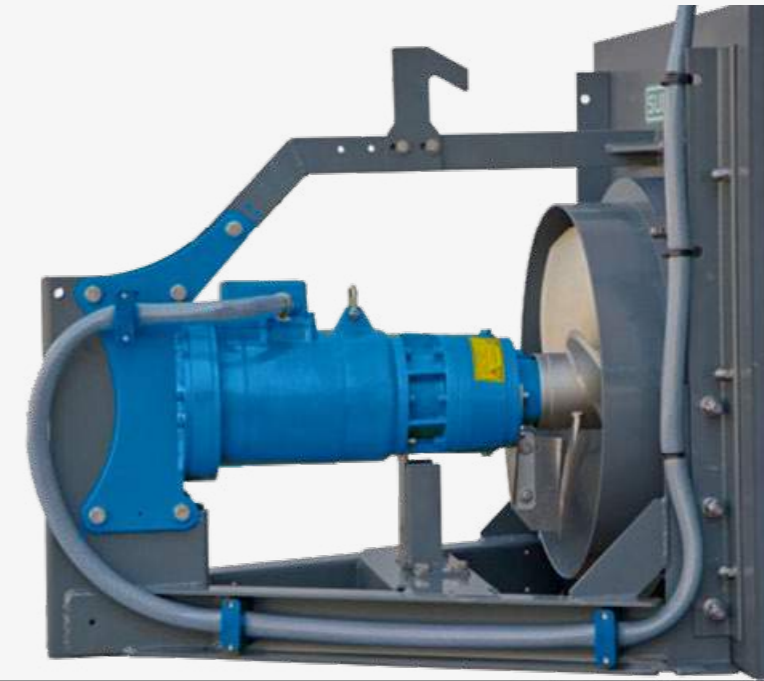
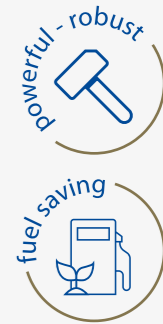
Type	Electric with rubber rotor		
Motor Power	11kW, 380 V		
Material	Body Ductile Iron	Rotors Rubber	Chassis Hot Dip Galvanized
Capacity	68 m ³ / hour		
Built-in Mixer	none		
Working Pressure	3 bar		
Hose Outlet Diameter	150 mm		
Cycle	540 rpm		
Stone Holder	Standard		
	It is a lobed type manure pump that can take its own air		

Product Description

Unlike the compressed type of manure pumps in the market, Naras manure pumps is a lobed type pump and is easy to clean. Through that it resists corrosion, it works for many years without performance loss in the process of transferring liquids which have high particulate ratio.



Manure Management Equipment



Manure Mixer

Technical Details

Type	Diving type
Motor Power	7.5 kW
Number of Blades	2 blades
Mixer Speed	325 rpm
Mixer Diameter	610 mm
Material	Casting body
Platform	Included (hot dip galvanized steel construction pedestal and calaskal)

Product Description

- The Electric motor and special design gearbox operate completely in the liquid.
- The mixer can work at the desired depth of the manure pit.
- Special design manure mixer blades (minimum energy use - maximum mixing capability)